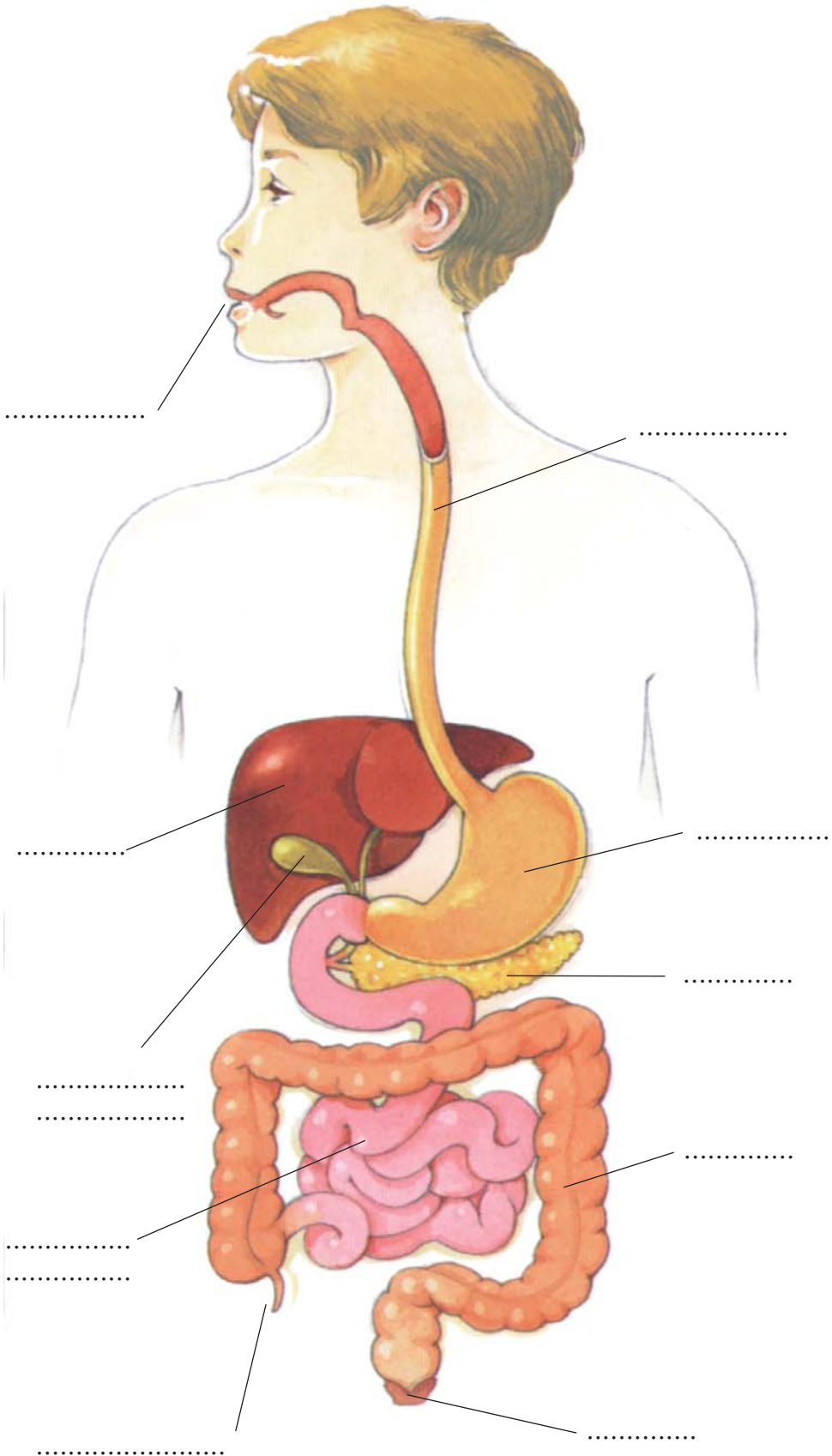
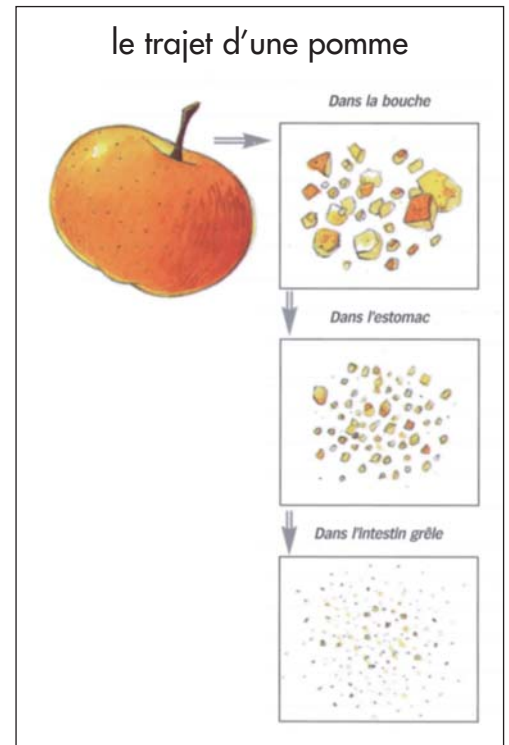


L'APPAREIL DIGESTIF ET L'APPAREIL URINAIRE

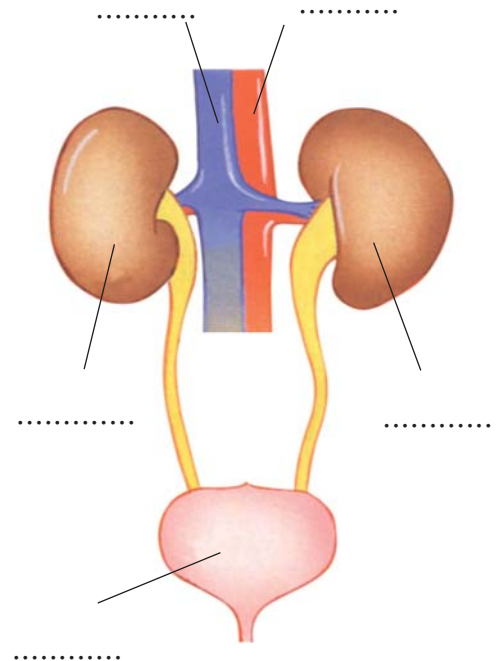
l'appareil digestif



le trajet d'une pomme

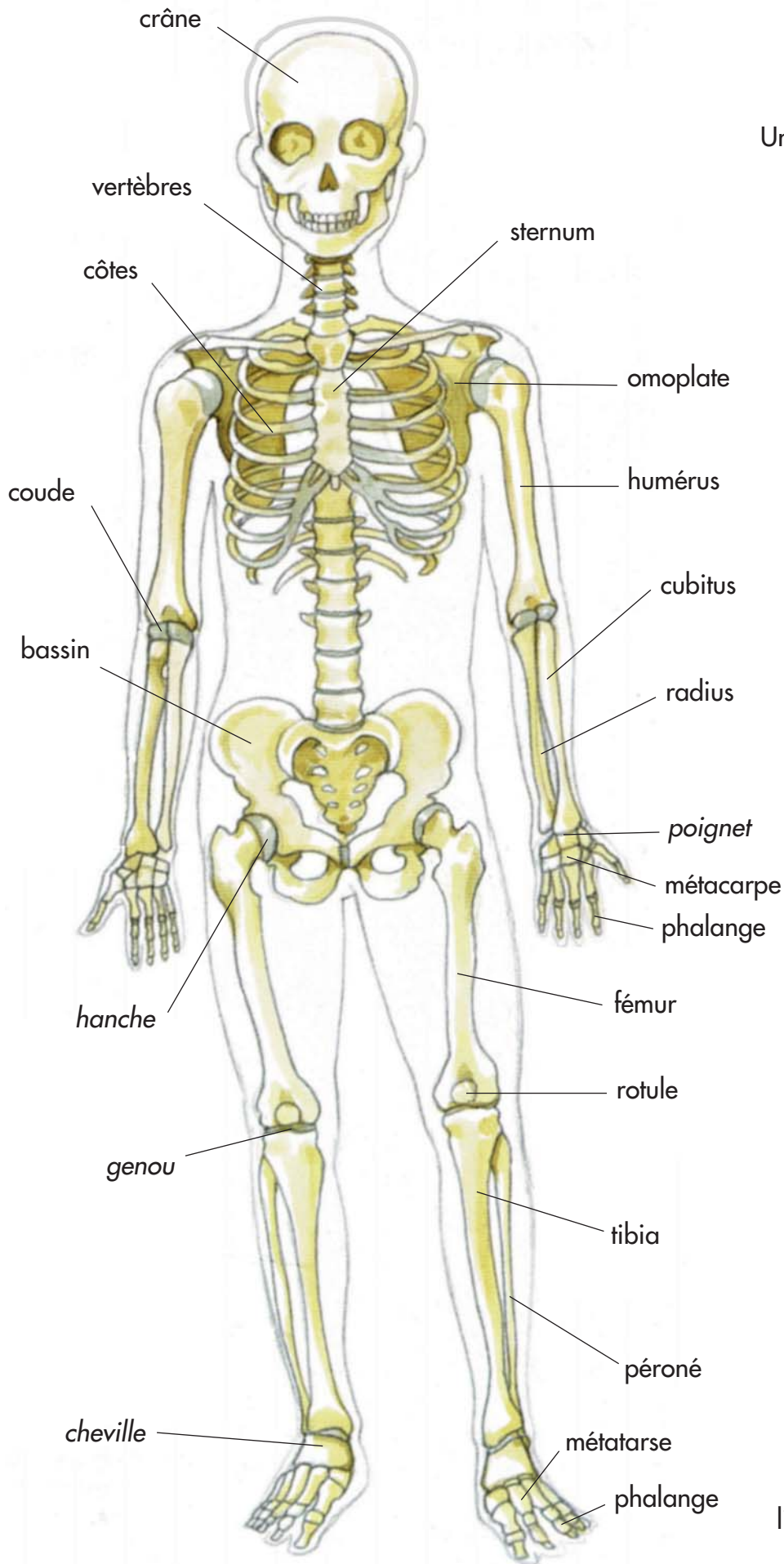


l'appareil urinaire

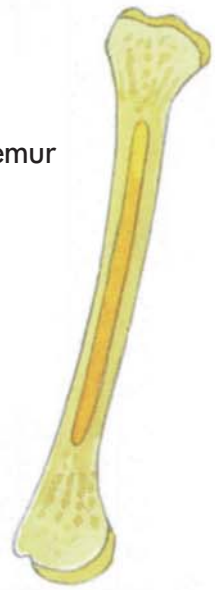


LE SQUELETTE

LES OS ET LES ARTICULATIONS



Un os long : fémur



Un os plat : omoplate



Un os court : dans le pied



Une articulation

